



NHS services and health needs in Arun

May 2026

The role of NHS Surrey and Sussex ICB

An NHS Integrated Care Board (ICB) is a statutory NHS organisation responsible for planning, managing, and funding health services for a specific local population.

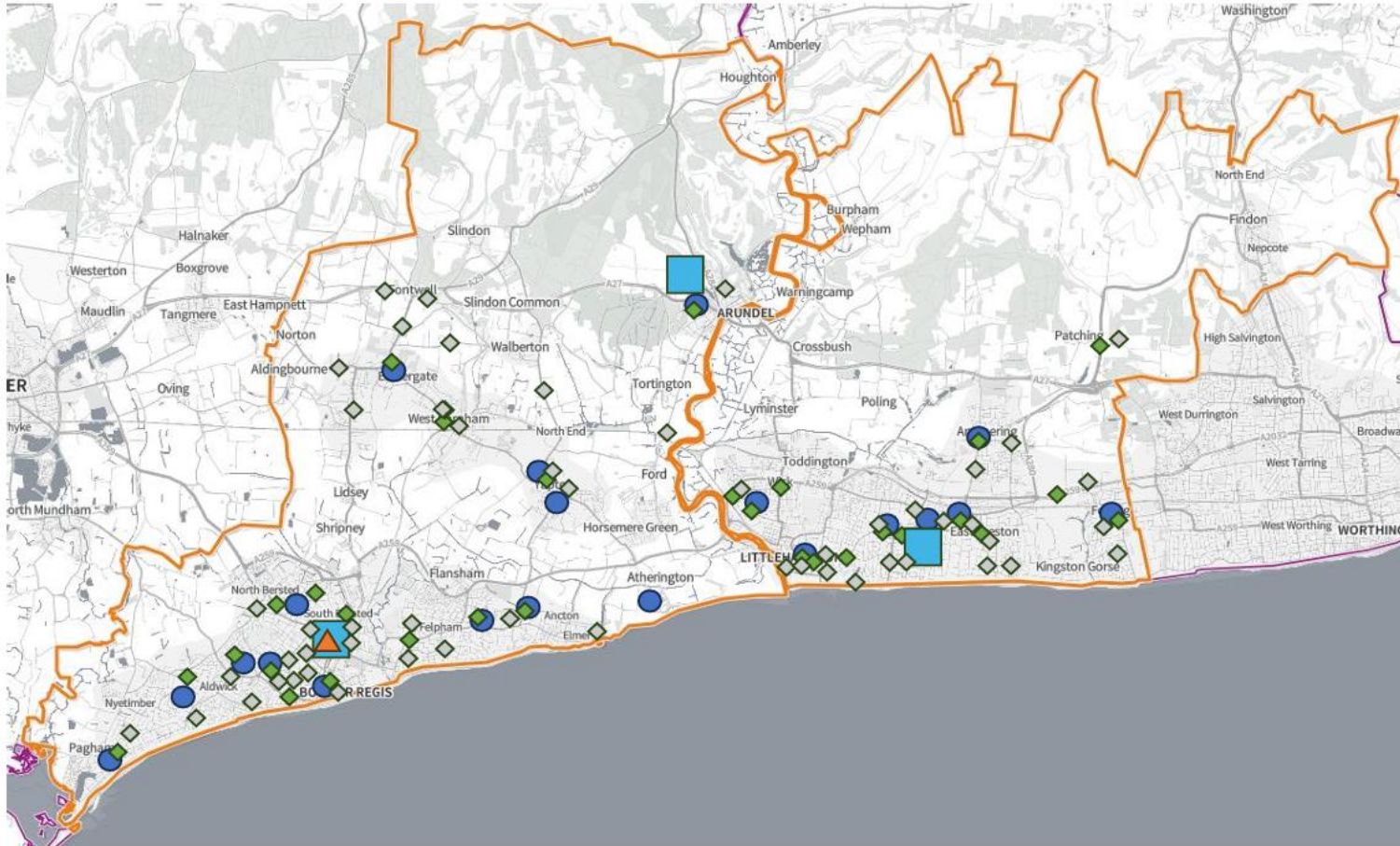
**Strategic
planning**

**Commissioning
services**

**Allocating the
budget**

**Integrating
care**

NHS services in Arun...



Legend

- GP Practice
- ◆ Pharmacy
- ▲ ED/UTC/MIU/CAU
- Acute Hospital
- Community Hospital
- ◆ Care Home

Alongside this:

- Community health services
- Mental health services
- Ambulance services
- Adult social care

...and in Littlehampton, Rustington, East Preston and Angmering



- 6 GP practices
- 11 pharmacies
- 17 care homes
- Arundel and District Community Hospital – 3.9 miles
- Bognor Regis War Memorial Hospital – 7.9 miles

A focus on the health needs of people in Arun

- Arun is the largest of the West Sussex ICT areas at over 164,000 residents. Over 1,500 residents live in residential care.
- Within Arun there are **ten areas ranking in the most deprived 20%** of neighbourhoods nationally, with a population of approximately 18,000 residents.
- Life expectancy is similar to England. However, there is a **considerable inequality**, with a 10-year gap in life expectancy for men and an 8-year gap for women.
- There is a higher percentage of adults with no qualifications, and a lower percentage of working-age adults in employment, compared with England.
- **Health challenges are present** with almost 22% of adults physically inactive, 11.7% of adults smoke and 27% of adults are obese.

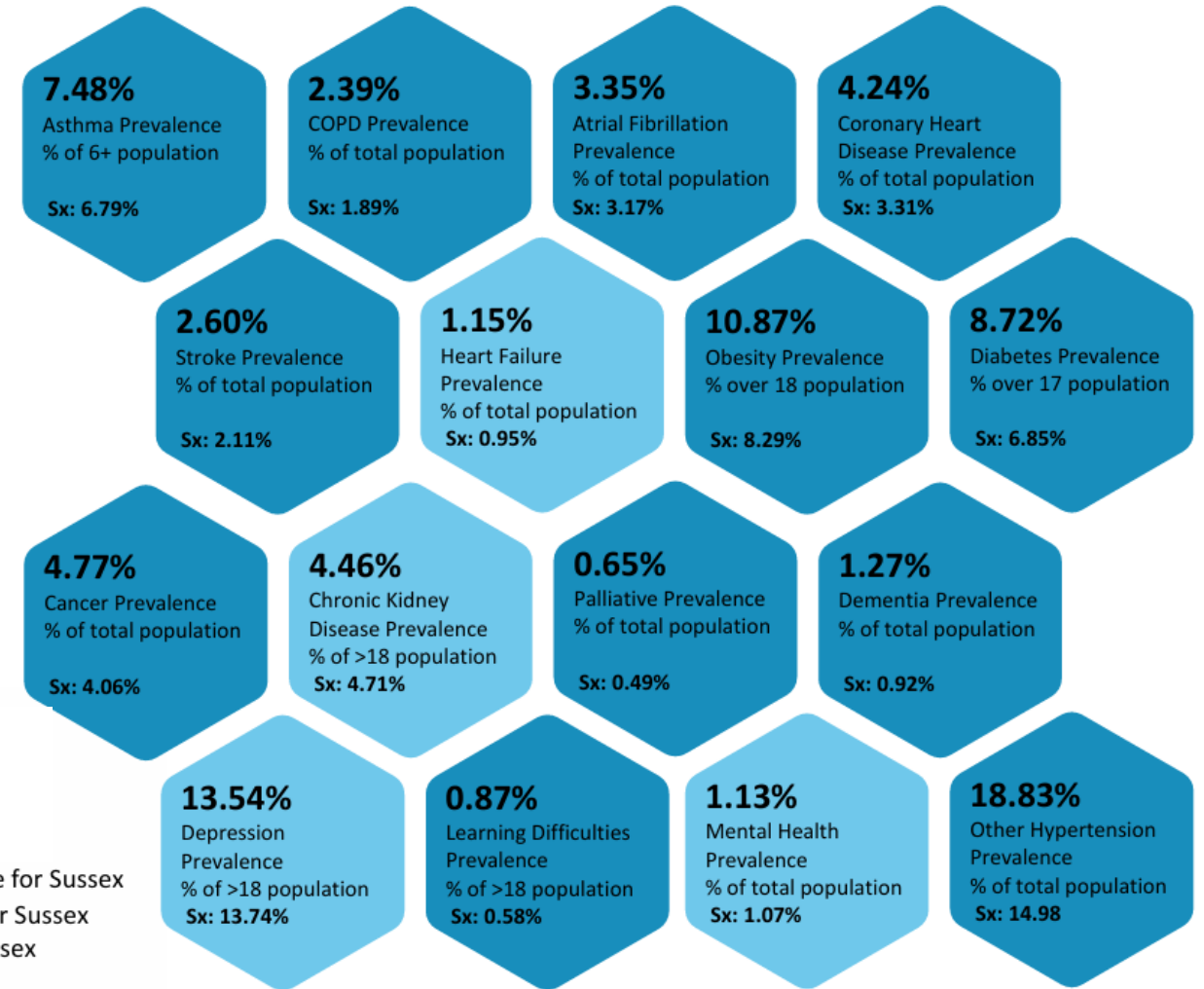


Long term conditions in Arun

For 12 of the 16 QOF prevalence registers, Arun ICT is in the highest quartile in Sussex.

The following areas are highlighted as they show the widest gap, compared to Sussex – obesity, diabetes, and wider hypertension

● In the lowest number quartile for Sussex
● In the inter-quartile period for Sussex
● In the highest quartile for Sussex
● No comparison made
(lowest or highest quartile does not mean good or bad)



How are people using these services?



A&E attendance

Lower than the
Sussex average

36.54
per 100
population
(Sussex 37.95)



NHS 111 calls

Lower use of
111 calls

90.31
per 100
population
(Sussex 98.12)



GP appointments

Higher number
of GP appts

660
per 1000 list
size
(Sussex 574)



Same Day GP

People seen by their GP
practice on the same day:

- Arun **46.4%**
- West Sx **46.6%**
- Sussex **43.7%**
- England **44.7%**

Focus on GP practice access locally

Practices Highlighted

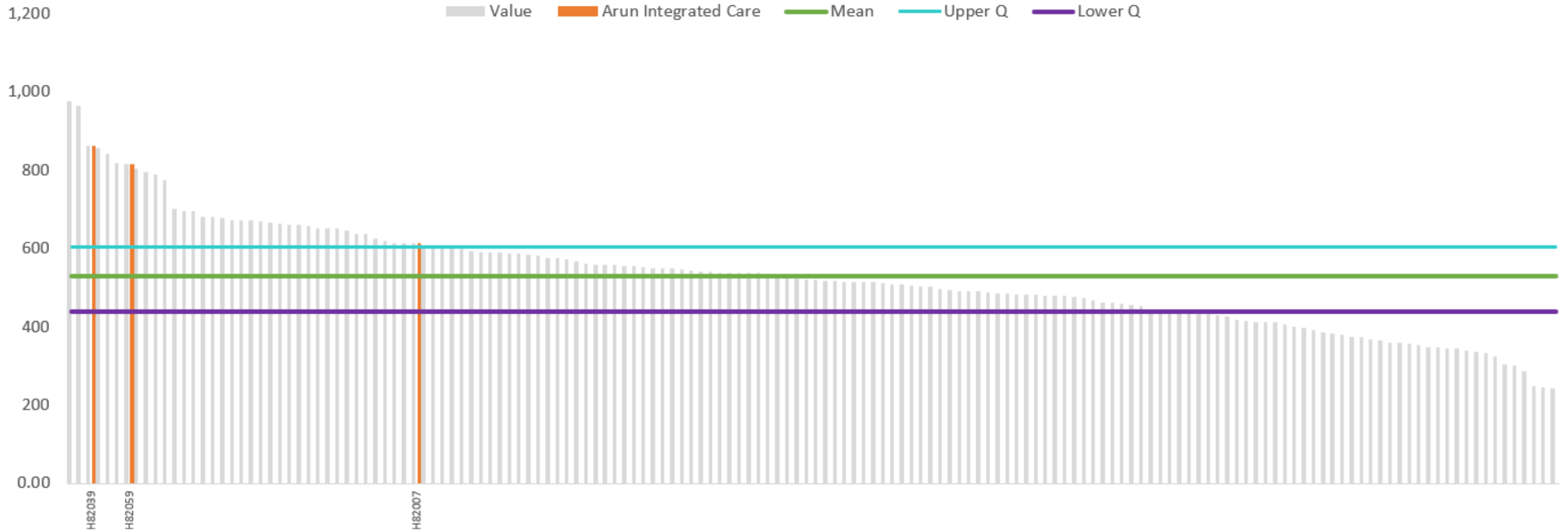
(H82039) Park Surgery 862.4

(H82059) Willow Green Surgery 814.4

(H82007) Westcourt Medical Centre 612.8

Highlight PCN

Arun Integrated Care



What is needed for the future...

High performing primary care services

Integrated community services



Prevention and reducing health inequalities

High quality, specialised services

A shift to neighbourhood care

- Focused on the needs of the people within an Integrated Care Team area (i.e. Arun)
- Brings services together to work in a joined up way for those residents
- To date, focus on those most frail and who need additional help and support
- Work is now widening to look at local priorities and what local people need
- Neighbourhood health centres are also part of this work – based around GP practices
- Centres are intended to build on existing community services and focus on the additional support a community needs such as prevention
- Littlehampton Health Centre and Bognor Health Centre currently on the list

